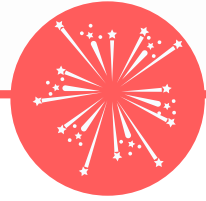


# “AUTHENTIC WORSHIP” SERIES

## “WHAT WORSHIP LOOKS LIKE IN REAL LIFE”

WEEK 3



### SPARKS

- Can you think of a situation where you had to rely on someone else instead of doing it on your own. What led to that realization?
- What’s a regular responsibility in your life that you wouldn’t personally pick if you had a choice, and what’s your usual attitude or mindset when doing it?
- Can you share a time you were under pressure or going through something difficult, and how you first responded to it?



### WORD

I appeal to you therefore, brothers, by the mercies of God, to present your bodies as a living sacrifice, holy and acceptable to God, which is your spiritual worship. <sup>2</sup>Do not be conformed to this world, but be transformed by the renewal of your mind, that by testing you may discern what is the will of God, what is good and acceptable and perfect.

Romans 12:1-2

Week 1 established that worship is not hype but a heart response to God. Week 2 built on that foundation by showing that acceptable worship is a transformed life, how we think, how we live, and how we treat others.

As we conclude the series, Romans 12 brings it all into real life. Worship is not only a moment in church or an expression of praise, but a daily lifestyle expressed in humility, service, love, endurance, and how we respond to both good and difficult situations. What worship looks like in real life is seen in how we live when no one is watching.

## 1. HUMILITY & FOCUS ON GOD'S MERCY.

*Romans 12:3*

*'For by the grace given to me I say to everyone among you **not to think of himself more highly than he ought to think**, but to think with sober judgment, each according to the measure of faith that God has assigned.'*

True worship begins with humility. When we see ourselves through the lens of God's mercy, pride loses its place. Humility means being faithful to your assignment from God and avoiding unnecessary distraction in other people's matters. Worship is living with the awareness that everything we are is sustained by His mercy, not our merit. Where in your life are you most tempted to rely on yourself instead of remembering God's mercy?

1

## 2. WORSHIP THROUGH SERVICE & LOVE IN COMMUNITY.

*Romans 12:4-5*

*'4 For as in one body we have many members, and the members do not all have the same function, 5 so we, though many, are one body in Christ, and individually members one of another.'*

*Romans 12:10*

*10 Love one another with brotherly affection. Outdo one another in showing honor. 11 Do not be slothful in zeal, be fervent in spirit, serve the Lord.'*

A life of worship is a life of service. We are one body with many members, each with different functions, and every role matters. Worship is expressed in how we serve at home, in relationships, at work, and in the Church.

This worship is not only service but also love, that is, being devoted to one another, honoring others above ourselves, and living with a heart that builds others up instead of competing with them. In serving God, we are called to serve with joy, stay faithful in our assignment, and keep our hearts free from complaints and grumbling. Do you see the people around you as assignments to love and serve, or as people to compare yourself with?

2

### 3. WORSHIP IN TRIALS & RESPONSE TO EVIL.

*Romans 12:12*

*'12 Rejoice in hope, be patient in tribulation, be constant in prayer.*

Worship is not exempt from hardship. There will be tribulations, needs, persecution, and tears, but worship chooses a different response. We choose to be joyful in hope, patient in affliction, and faithful in prayer.

Even in difficulty, we are called not to be overcome by evil, but to overcome evil with good. Worship is seen in how we endure pressure and how we respond when life is unfair. What does your response in difficult seasons reveal about your trust in God?

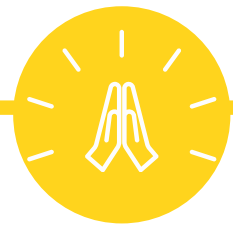
## LIVE IT!

- Choose humility by remembering that everything you have is because of God's mercy.
- Serve faithfully knowing your role is important in the body of Christ.
- When something goes wrong this week, choose to pray before reacting or venting.



## PRAYER

- Ask God to expose pride in subtle areas of your life.
- Thank God for giving you a place in His body and a role to play. Ask Him for a heart that serves willingly without needing recognition.
- Pray for a calm spirit that chooses prayer over reaction.



# **“AUTHENTIC WORSHIP” SERIES**